

# MADE IN THE USA

FROM

# Advantage

EMBLEM & SCREEN PRINTING

## TEES

VOLUNTAR K N I T W E A R

### DAILY TEES

The ultimate all-purpose tee, with a soft hand and strong heart.

- 4.5-ounce, 100% combed ring spun cotton, 30 singles
- Slightly slimmer body and shorter sleeves

#### DAILY TEE

VL45 • ADULT S-4XL

9 Colors



#### WOMEN'S V-NECK TEE

LVL45V • WOMEN'S XS-4XL

5 Colors



### CHORE TEES

Strong-yet-soft styles, always ready to step up to any challenge.

- 6-ounce, 100% ring spun cotton, 18 singles
- Classic fit

#### CHORE TEE

VL60 • Adult S-4XL

9 Colors



#### LONG SLEEVE TEE

VL60LS • Adult S-4XL

7 Colors



## FLEECE

VOLUNTAR K N I T W E A R

### CHORE FLEECE

Crafted with grit and determination, these super-tough styles promise lasting wear and resilience.

- 13-ounce, 80/20 cotton/polyester
- Slightly forward shoulders
- Side seamed

#### CREWNECK

VL130 • Adult S-4XL

2 Colors



#### PULLOVER HOODIE

VL130H • Adult S-4XL

4 Colors



#### FULL-ZIP HOODIE

VL130ZH • Adult S-4XL

3 Colors



### TRI TEE

Made from three yarns for softness, strength and exceptional drape.

- 4.5-ounce, 50/25/25 polyester/combed ring spun cotton/rayon, 32 singles
- Slightly slimmer body and shorter sleeves

#### TRI TEE

VL40 • ADULT S-4XL

6 Colors



### ALL-AMERICAN TEES

These rugged, heavyweight tees stand up to the toughest tasks.

- 5.5-ounce, 100% cotton, 20 singles
- Classic fit

#### ALL-AMERICAN TEE

VL100 • Adult S-4XL

11 Colors



#### POCKET TEE

VL100P • Adult S-4XL

8 Colors



#### LONG SLEEVE TEE

VL100LS • Adult S-4XL

8 Colors



 **BAYSIDE**  
THE TRUE AMERICAN MADE TEE™

### SUPER HEAVY OVERSIZED FLEECE

Oversized, relaxed fit for a modern streetwear look.

- 16-ounce, 100% cotton
- Pre-shrunk heavyweight
- Spandex in cuffs and band

#### CREWNECK

4025 • Adult S-3XL

6 Colors



#### PULLOVER HOODIE

4000 • Adult S-3XL

7 Colors



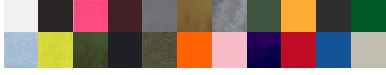
MANY OTHER PRODUCTS AVAILABLE... CONTACT US FOR A QUOTE!

# KNIT BEANIES

• Super Soft 100% Acrylic Knit Beanie

## KNIT BEANIE

3810 • Approximately 8 1/2" long  
22 Colors



## KNIT CUFF BEANIE

3825 • Approximately 12" long  
16 Colors



# TOTE BAGS

- 12-ounce, 100% cotton canvas
- Natural web handles reinforced at stress points
- Bottom gusset

## CANVAS JUMBO TOTE BAG

BS600 • 20"w x 14 1/2"h x 4 1/2"d  
6 Colors



## CANVAS MEDIUM GUSSET TOTE BAG

BA750 • 14 1/2"w x 11"h x 4"d  
9 Colors



# BANNERS

- 13oz tear resistant vinyl with hemmed edges and brass grommets.
- No minimum quantity!
- 30 day limited warranty.
- Standard and custom-size banners available
- Great for indoor & outdoor use!
- Printed with water resistant, non-fading inks.



# YARD SIGNS

- Easy, inexpensive way to get noticed - each sign comes with a metal "h" stand.
- Perfect for contractors, realtors, schools, and special events.
- Larger signs also available.

FULL COLOR 18" x 24" SIGN  
One or Two-Sided

FULL COLOR 24" x 36" SIGN  
One or Two-Sided



*Look for the Union Label*



Advantage Emblem & Screen Printing | [advantageemblem.com](http://advantageemblem.com)

PRICED RIGHT | LARGE VARIETY | QUICK TURN AROUND | IN-HOUSE | ON-TIME | ACCURATE

FIND MORE OPTIONS ONLINE:



CONTACT US AT [sales@advantageemblem.com](mailto:sales@advantageemblem.com)

ADVANTAGEEMBLEM.COM • 218.626.4948 • 4313 HAINES ROAD - DULUTH, MINNESOTA  
EMBROIDERY | SCREEN PRINTING | BANNERS | SIGNS | AWARDS | ENGRAVING